



# **finemark**

**Fire, Safety & Security Equipment  
& all types of Safety Signs.**

**We are your partner in getting ISO Certification  
Safety Equipments Catalogue**

**Head Office:**

A-3 Amir Chamber, Opposite P.I.A Planetarium,  
Block 13-A, Gulshan-e-Iqbal, Karachi- 75300.  
Ph: 34144562 - 3, 34984467.

**Branch Office (Aiwan-e-Tijarat Road):**

Shafi Chamber Nicol Road, Karachi .  
Ph: 32422910, 32471130.  
signnsafety@yahoo.com  
info@finemarksign.com  
[www.finemarksign.com](http://www.finemarksign.com)



**MUHAMMAD IKRAM  
FOUNDER OF FINEMARK**





We are your partner in getting **ISO Certification**

## Company Profile

**Finemark** is one of the Largest Manufactures of Health, Safety, General Signs and personal Protective Equipment in Pakistan. Supplying Both From stock and to your Individual Custom Requirements.

Together with our Renowned Commitment to Exceptional Customer Care, We at the Finemark Signs and Safety can Offer Unsurpassed Quality of Service.

- \* Industrial Safety and Security Equipment.
- \* Fire Fighting Equipment / Fire & Safety Training.
- \* All Types of Fire Extinguisher (New) & (Refilling).

## Content

1. Personal Protective Equipment.
2. Industrial Safety Equipment.
3. Road Safety Equipment.
4. Fire Alarm System.
5. Security.
6. Fire Fighting Equipment.

## PERSONAL PROTECTIVE EQUIPMENT



**SAFETY SHOES**



**GUM BOOT**



**SINGLE & DOUBLE SHOCK ABSORBER**



**SAFETY HARNESS**



**PENT & SHIRT UNIFORM**



**REFLECTOR JACKET TAIWAN**



**FULL FACE MASK**



**ELBOW & KNEE GUARD**



**HALF FACE MASK NP-305**



**HALF FACE MASK NP-306**



**SAFETY GOGGLES**



**SAFETY SPECTACLE**



**SAFETY HELMET**



**EAR MUFF**



**SAFETY FACE SHIELD**



**MESH GLOVES**



**SAFETY COVERALL (MAKE TO ORDER)**



**ELECTRICAL GLOVES**



**SAFETY SPECTACLE FOCUS**



**GUM BOOT**



## INDUSTRIAL SAFETY EQUIPMENT



**BIG BEAM LIGHTS**



**EXIT LIGHT**



**EXIT / EMERGENCY LIGHT FM**



**EMERGENCY EXIT LIGHT**



**FLOOR MARKING RED TAPE 2" & 3"**



**FIRST AID BOX PLASTIC**



**FIRST AID BOX WOODEN**



**COMPLAINT BOX WOODEN**



**EYE WASH BOTTLE**



**EYE WASH SHEET**



**SPILL KIT**



**ELECTRICAL RUBBER MATT**



**EYE WASH WALL MOUNTED**



**EYE WASH FLOOR MOUNTED**



**FULL BODY SHOWER**



**WET FLOOR SIGN**



**BARRICADE CHAIN RED & WHITE**



**BARRICADE CHAIN RED & WHITE**



**WINDSOCK**



**BARRIER TAPES & SELF ADHESIVE TAPES**



## **ROAD SAFETY EQUIPMENT**



**BATON LIGHT**



**CONVEX MIRROR**



**CAT EYES**



**VEHICLE STOPPER**



**PLASTIC BARRIER**



**DELINEATOR**



**ROAD SPIKES**



**TRAFFIC SIGNAL LIGHTS**



**CORNER GUARD**



**TRAFFIC CONE  
18" & 28"**



**REFLECTIVE  
SHAKER**



**RUBBER HUMPH**



## FIRE ALARM SYSTEM



**SOUNDER WITH FLASHER**



**MINI HOOTER**



**HOOTER**



**CONTROL BOX**



**FIRE ALARM SYSTEM BOX**



**SMOKE ALARM 9V**



**HEAT DETECTOR**



**EMERGENCY BREAK GLASS**



**FIRE ALARM SYSTEM CABLE**



**HOOTER & REVOLVING LIGHT**

## FIRE ALARM

### FIRE ALARM CENTRALIZED SYSTEM



### FIRE ALARM



## SECURITY EQUIPMENT



**THUMBPRINT SECURITY**



**VEHICLE SEARCH MIRROR**



**SECURITY BOX**



**METAL DETECTOR**



## **FIRE FIGHTING EQUIPMENT**



**FIRE BLANKET**



**EMERGENCY  
ROPE LADDER**



**FIREMEN AXE**



**FIRE HYDRANT  
VALVE**



**SPRINKLER**



**FIRE HOSE  
REEL 1"**



**FIRE HOSE  
PIPE 1.5", 2" & 2.5"**



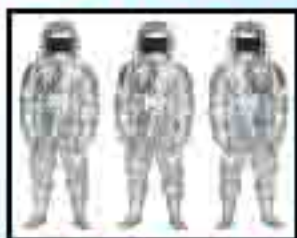
**FIRE HOSE REEL  
BOX**



**ROPE**



**BREATHING  
APPARATUS**



**FIRE SUIT**



**4 BUCKET WITH  
STAND**



**FIRE BUCKET**



**FIRE HOSE PIPE  
NOZZLE**



**FIRE HOSE PIPE  
COUPLING**



**STRETCHER**



**ANTI SPARK  
SHOWEL**



**LIFE BUOY**



**LIFE JACKET**

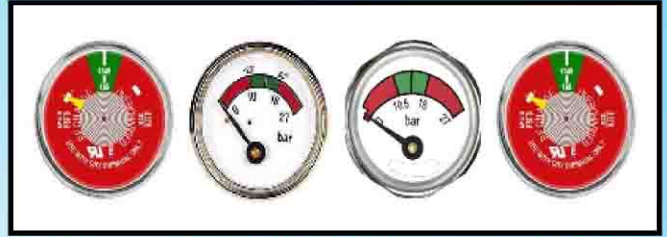


**PILLAR HYDRANT**

## FIRE FIGHTING EQUIPMENT



**FIRE EXTINGUISHER VALVE**



**FIRE EXTINGUISHERS GAUGE**

